

HAFIZLIK DENEME

16

10 SORU  
15 DAKİKA

İNGİLİZCE

DOĞRU SAYISI

YANLIŞ SAYISI

KONU ADI

General Revision Test-1

Ad Soyad :

1	A	B	C	D
2	A	B	C	D
3	A	B	C	D
4	A	B	C	D
5	A	B	C	D
6	A	B	C	D
7	A	B	C	D
8	A	B	C	D
9	A	B	C	D
10	A	B	C	D

Optik No :   
660

FERNUS

MOD ERD



Okut/İndir

Read the text and answer the questions 1-2.

- Snow leopards are large wild animals of the cat family.
- They live in the mountains of Central and South Asia.
- The population of snow leopards is 5,000.
- They have white fur with black spots.
- They weigh up to 32 kg, and measure up to 1 m.
- They mainly feed on other animals.
- They are endangered animals. People hunt them for their fur. And snow leopards lose their habitat because of the global warming.



1. Which of the following does NOT have an answer in the text above?

- A) Where can you find a snow leopard?      B) What do snow leopards eat?  
C) Why are snow leopards important?      D) How many snow leopards are there in the wildlife?

2. Snow leopards are endangered animals because - - - - .

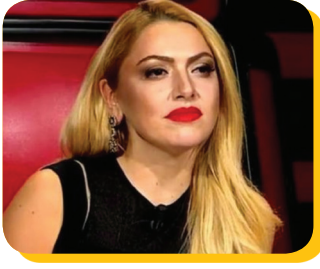
- A) the level of snow on Asia mountains decreases      B) they hunt other animals  
C) the people should protect their natural habitat      D) they are about 32 kg and 1,1 m.



GÜNAY  
YAYINLARI

7  
SINIF

3.



**Sibel:** Who is your favourite singer?

**Buse:** I love Hadise. Do you know her?

**Sibel:** Well, I don't know anything about her. - - - - ?

**Buse:** She is tall and of medium weight with long blond hair.

**Which of the following completes the dialogue?**

- A) What does she look like?
- B) What is she like?
- C) What does she like doing?
- D) What does she do in her free time?

4.



**Inventor** : Blaise Pascal

**Invention** : Calculator

**Year** : 1642

**Country** : France

**Which of the following questions does NOT have an answer in the chart above?**

- A) Who invented the calculator?
- B) Why did Pascal invent the calculator?
- C) When did Pascal invent the calculator?
- D) What was the invention of Blaise Pascal?

5.

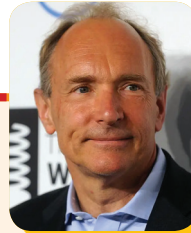
I have got a new friend at school. His name is Scott. **(I)** He has got a great personality. **(II)** We get on well with each other because he is honest and funny. **(III)** He is well built and handsome with wavy dark hair. **(IV)** He is also friendly and cheerful.

**Which sentence is the ODD one?**

- A) I
- B) II
- C) III
- D) IV

**Read the text and complete the sentence below.**

6.



Tim Barners-Lee is a famous inventor. He was born on June 8, 1955 in London, but now he lives in Massachusetts. He went to Sheen Mount Primary School and then, Emanuel School in London. Then he got a degree in Physics at the Queen's College in Oxford.

**The text gives information about Tim Barners-Lee's - - - - .**

- A) career
- B) family
- C) awards
- D) education

Look at the table, read the text and answer the questions 7-8.

Mr. and Mrs. Martin have two daughters. They are at the same school and they go to school by school bus every day. After school, Sally attends swimming and karate clubs, but Dorothy attends volleyball and badminton clubs.

#### AFTER SCHOOL CLUBS

	MONDAY	TUESDAY	WEDNESDAY	THURSDAY	FRIDAY
	6 p.m.-7 p.m.		6 p.m.-7 p.m.		
			4 p.m.-5 p.m.		5 p.m.-6 p.m.
		6 p.m.-7 p.m.		4 p.m.-5 p.m.	
	6 p.m.-7 p.m.		5 p.m.-6 p.m.		

7. According to the table and the text, - - - - .

- A) there is only badminton club on Thursday
- B) Sally doesn't have any clubs on Monday
- C) swimming and karate clubs are at the same hours
- D) Dorothy has badminton club on Friday



8. Sally can go back home with Dorothy - - - - .

- A) on Wednesday
- B) every afternoon
- C) once a week
- D) on Tuesday evening



Read the information, look at the table and answer the questions 9-10.

Dave prepared a questionnaire and asked his friends some questions about television programmes. He listed their answers and made the table below.

					
LIKE	Rose	David		Nancy	Steve
DISLIKE	David	Nancy	Steve		Rose
FAVOURITE		Steve	Rose	David	Nancy

9. Which of the following is NOT correct according to the table?

- A) David prefers sports programmes to TV series.
- B) Rose is less interested in talk shows than TV series.
- C) Nancy is keen on the news more than documentaries.
- D) Steve likes watching the news, but Rose doesn't.

10. Which of the following did NOT Dave ask in the questionnaire?

- A) What kind of programmes do you like watching?
- B) Which TV programmes do you hate?
- C) What type of TV programmes do you prefer?
- D) When do you watch your favourite programme?